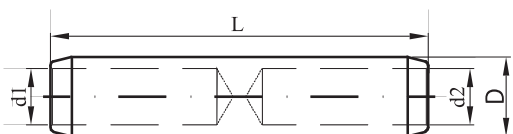


ALUMINUM-COPPER JOINTS MV

СОЕДИНИТЕЛЬНЫЕ ВТУЛКИ AlCu

MANCHONS DE JONCTION ALUMINIUM-CUIVRE MV



MATERIAL: Al, Cu  
МАТЕРИАЛ: Al, Cu  
MATÉRIEL: Al, Cu



No. n/mj N. Ord.	Cable cross-section Сечение провода Section		Code Код (номер) Code	Type Тип Type	Dimension (mm) Размер (мм) Dimensions (mm)				Packing Упаковка Emballage	Weight Вес Poids
	Al	Cu			D	d1	d2	L		
1	50	16	P40-67-10	ALCU 50/16	20	9	5.5	106.5	100/500	189.10
2	50	25	P40-67-11	ALCU 50/25	20	9	6.5	106.5	100/500	184.02
3	50	35	P40-67-12	ALCU 50/35	20	9	8	106.5	100/500	175.04
4	70	16	P40-67-13	ALCU 70/16	20	11	5.5	106.5	50/200	184.20
5	70	25	P40-67-14	ALCU 70/25	20	11	6.5	106.5	50/200	179.30
6	70	35	P40-67-15	ALCU 70/35	20	11	8	106.5	50/200	170.50
7	70	50	P40-67-16	ALCU 70/50	20	11	9	106.5	50/200	163.60
8	95	16	P40-67-17	ALCU 95/16	20	12.5	5.5	106.5	50/200	179.90
9	95	25	P40-67-18	ALCU 95/25	20	12.5	6.5	106.5	50/200	175.00
10	95	35	P40-67-19	ALCU 95/35	20	12.5	8	106.5	50/200	166.20
11	95	50	P40-67-20	ALCU 95/50	20	12.5	9	106.5	50/200	159.30
12	95	70	P40-67-21	ALCU 95/70	20	12.5	11	106.5	50/200	143.10
13	120	16	P40-67-22	ALCU 120/16	25	13.7	5.5	133	50/200	310.20
14	120	25	P40-67-23	ALCU 120/25	25	13.7	6.5	133	50/200	305.40
15	120	35	P40-67-24	ALCU 120/35	25	13.7	8	133	50/200	296.50
16	120	50	P40-67-25	ALCU 120/50	25	13.7	9	133	50/200	289.60
17	120	70	P40-67-31	ALCU 120/70	25	13.7	11	133	50/200	273.40
18	120	95	P40-67-27	ALCU 120/95	25	13.7	12.5	133	50/200	259.10
19	120	120	P40-67-33	ALCU 120/120	25	13.7	13.7	133	50/200	253.60
20	150	16	P40-67-28	ALCU 150/16	25	15.5	5.5	133	25/100	301.90
21	150	25	P40-67-29	ALCU 150/25	25	15.5	6.5	133	25/100	297.10
22	150	35	P40-67-30	ALCU 150/35	25	15.5	8	133	25/100	288.20
23	150	50	P40-67-26	ALCU 150/50	25	15.5	9	133	25/100	281.30
24	150	70	P40-67-32	ALCU 150/70	25	15.5	11	133	25/100	265.10
25	150	95	P40-67-80	ALCU 150/95	25	15.5	12.5	133	25/100	250.80
26	150	120	P40-67-34	ALCU 150/120	25	15.5	13.7	133	25/100	238.10
27	185	16	P40-67-35	ALCU 185/16	32	17	5.5	143.5	25/100	532.50
28	185	25	P40-67-36	ALCU 185/25	32	17	6.5	143.5	25/100	528.10
29	185	35	P40-67-37	ALCU 185/35	32	17	8	143.5	25/100	519.10
30	185	50	P40-67-38	ALCU 185/50	32	17	9	143.5	25/100	512.10
31	185	70	P40-67-39	ALCU 185/70	32	17	11	143.5	25/100	496.10
31	185	95	P40-67-40	ALCU 185/95	32	17	12.5	143.5	25/100	481.10
32	185	120	P40-67-41	ALCU 185/120	32	17	13.7	143.5	25/100	469.10
33	185	150	P40-67-42	ALCU 185/150	32	17	15.5	143.5	25/100	447.10
34	185	185	P40-67-44	ALCU 185/185	32	17	17	143.5	25/100	439.10
35	240	50	P40-67-46	ALCU 240/50	32	19.5	9	143.5	25/100	495.90
36	240	70	P40-67-82	ALCU 240/70	32	19.5	11	143.5	25/100	479.90
37	240	95	P40-67-83	ALCU 240/95	32	19.5	12.5	143.5	25/100	464.09
38	240	120	P40-67-49	ALCU 240/120	32	19.5	13.7	143.5	25/100	452.90
39	240	150	P40-67-50	ALCU 240/150	32	19.5	15.5	143.5	25/100	430.09
40	240	185	P40-67-47	ALCU 240/185	32	19.5	17	143.5	25/100	411.09
41	240	240	P40-67-48	ALCU 240/240	32	19.5	19.5	143.5	25/100	403.10
42	300	70	P40-67-56	ALCU 300/70	40	23.3	11	156	10/50	786.10
43	300	95	P40-67-57	ALCU 300/95	40	23.3	12.5	156	10/50	772.10
44	300	120	P40-67-58	ALCU 300/120	40	23.3	13.7	156	10/50	759.10
45	300	150	P40-67-59	ALCU 300/150	40	23.3	15.5	156	10/50	738.10
46	300	185	P40-67-60	ALCU 300/185	40	23.3	17	156	10/50	718.10
47	300	240	P40-67-61	ALCU 300/240	40	23.3	19.5	156	10/50	681.10
48	400	120	P40-67-68	ALCU 400/120	40	26	13.7	156	10/50	735.50
49	400	150	P40-67-69	ALCU 400/150	40	26	15.5	156	10/50	714.50
50	400	185	P40-67-70	ALCU 400/185	40	26	17	156	10/50	694.50
51	400	240	P40-67-71	ALCU 400/240	40	26	19.5	156	10/50	657.50
52	400	300	P40-67-72	ALCU 400/300	40	26	23.3	156	10/50	591.50