

CODE: P412922
Item: PG Connector UNIMAX AL 16-120/2

PRODUCT TECHNICAL SPECIFICATION

Description: Non-tension aluminium to aluminium parallel groove connector which has two M8 bolts. Connector has high quality conductive grease to provide the best electrical conductivity performances between main and branch conductor.

Main conductor cross-section: 16-120 mm² (Aluminum)

Main conductor diameter: 4.2-13.2 mm

Branch conductor cross-section: 16-120 mm² (Aluminum)

Branch conductor diameter: 4.2-13.2 mm

Dimensions

a [mm] 43.6 mm

b [mm] 42 mm

Other characteristics

Connector material: Aluminum alloy

Bolt: 2x M8

Coating: Default hot-dip galvanized (other as per clients request)

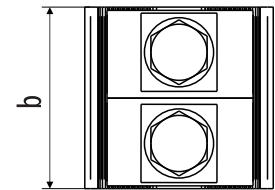
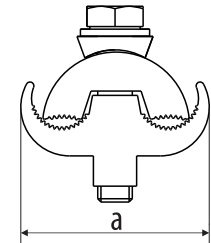
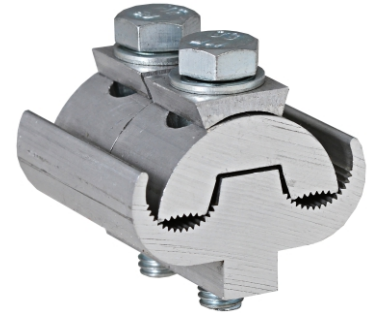
Tightening torque: 20 Nm

Required tools: 13 mm wrench

Insulation case: IZO-15 (P414212)

Marking: PLAMEN, AL 16- 120 mm², 20 Nm

Standard: SRPS N. F4.106, according to EN61238-1 requirements



Packing

Product weight: 118.00g per piece

Bag packing: 50 pcs

Box packing: 150 pcs

Box BRUTO weight: 18.12 kg

